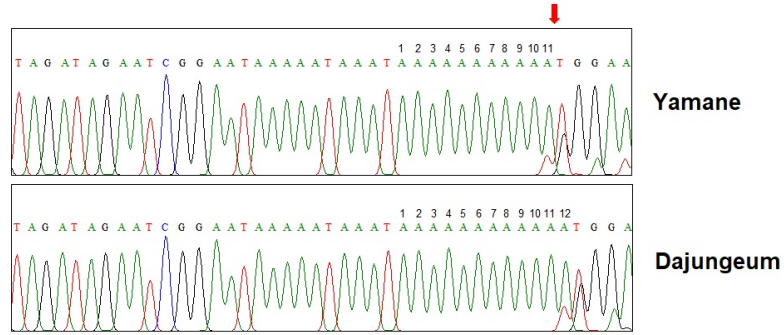


A

```

860      870      880      890      900      910      920      930      940      950
Daijungeum TCGAATGGGTAGATAGAATCGGAATAAAATAAATAAAAAAAAAAAATGGAAATTCAAAACGGAATCAAAAAATGAAATTAGCAAGAACTCGAAT
Yamane      TCGAATGGGTAGATAGAATCGGAATAAAATAAATAAAAAAAAAAAATGGAAATTCAAAACGGAATCAAAAAATGAAATTAGCAAGAACTCGAAT
Ichang papeda TCGAATGGGTAGATAGAATCGGAATAAAATAAATAAAAAAAAAAAATGGAAATTCAAAACGGAATCAAAAAATGAAATTAGCAAGAACTCGAAT
*****
    
```

B



Supplementary Fig. 4. Identification of a 1-bp InDel between two yuzu cultivars, ‘Daijungeum’ and ‘Yamane’, in the Cp1 hypervariable region of chloroplast genome sequences. A. Alignment of Cp1 sequences of two yuzu cultivars and Ichang papeda. A vertical arrow indicates the position of the 1-bp InDel. B. Chromatography of Sanger sequencing of the Cp1 region flanking the 1-bp InDel. Vertical arrow indicates the position of 1-bp InDel.